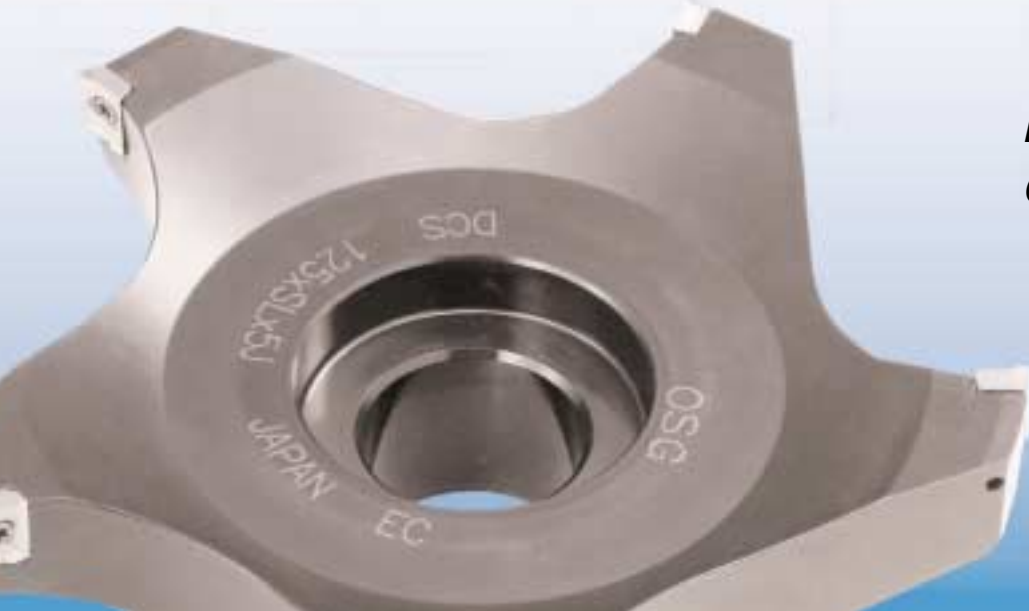




EXOCARB®-DISC CUTTER™

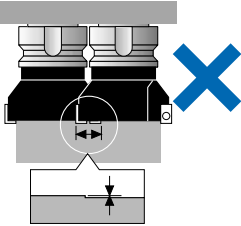
LARGE FACE MILLS FOR SMALL MACHINES
PATENT PENDING



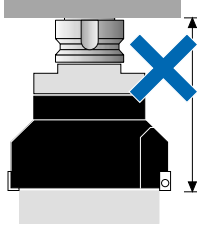
For Aluminum and
Cast Iron



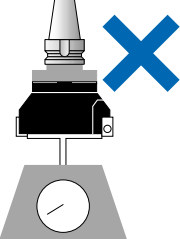
Why do we need the Disc Cutter?



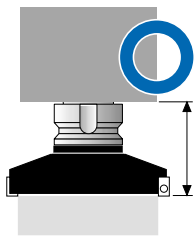
Multiple passes on large, wide work pieces are required for small diameter cutter bodies which result in blend lines on the finished part.



Larger cutter bodies remove material in fewer passes, but are typically heavier, requiring more weight and protrusion from the arbor.



On smaller machines, the total tool weight allowance, including the arbor, is 3kg(6.6lbs). A conventional 125mm cutter is too heavy for these machines.



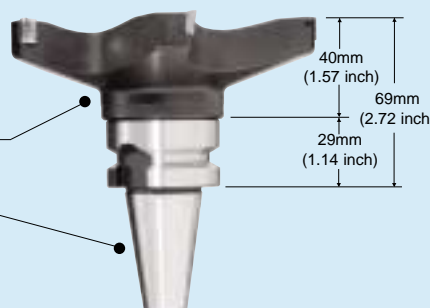
OSG Solution

OSG Disc Cutter solves these issues by designing a lighter, large diameter cutter without sacrificing rigidity.

Thin and Light Steel Body

Disc Cutter S = 125mm, 1.0kg (2.2lbs)
Disc Cutter PRO = 125mm, 1.3kg (2.86lbs)

Arbor = 0.6kg (1.32lbs)



Less than 1/2 of the weight compared to competitors
Short reach results in high rigidity
High rigidity allows High - Speed & Feed milling

DISC CUTTER S

ROUGHING



DISC CUTTER PRO

FINISHING

The Performance of Disc Cutter S

Tool	DC-S 125 x SL x 5J (125mm)
Insert	APHT0903PPR-73
Work Material	A7075
Speed	8,000 RPM
Feed	158 Inch/Min (.004 inch/t)
Depth of Cut	3mm (.12 inch)
Width of Cut	100mm (4 inch)
Machine	Vertical Machining Center BT30 5.5kw

MRR: 1,200 cm³/Min

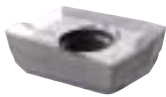
List 6440

EDP Number	Description	Cutter Dia. (mm/inch)	Height (mm/inch)	Weight kg(lb)	No. of Insert
8070255	80xSLx4J	80 / 3.15	40 / 1.57	0.44 (1)	4
8070256	100xSLx4J	100 / 3.94	40 / 1.57	0.6 (1.34)	4
8070257	125xSLx5J	125 / 4.92	40 / 1.57	1 (2.20)	5

List 6540

Insert for Aluminum, Aluminum Alloy and Copper

Insert for Cast Iron and Ductile Cast Iron



EDP Number	Description	Material
8033300	APHT0903PPR-73	K10T

EDP Number	Description	Material
8059301	APHT0903PPR-52	K15CA

The Performance of Disc Cutter PRO

Tool	DC-P 125 x SL x 5J (125mm)
Insert	XOHW1104PDR (PCD)
Work Material	A7075
Speed	5,000 RPM
Feed	49 Inch/Min (.004 inch/t)
Depth of Cut	0.5mm (.02 inch)
Width of Cut	100mm (4 inch)
Machine	Vertical Machining Center BT30 5.5kw

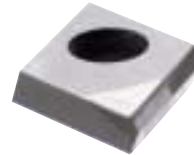
Surface Roughness: Ra 0.171um

List 6441

EDP Number	Description	Cutter Dia. (mm/inch)	Height (mm/inch)	Weight kg(lb)	No. of Insert
8070265	80xSLx4J	80 / 3.15	40 / 1.57	0.48 (1.06)	3
8070266	100xSLx4J	100 / 3.94	40 / 1.57	0.7 (1.54)	4
8070267	125xSLx5J	125 / 4.92	40 / 1.57	1.3 (2.86)	5

List 6541

Finishing Insert



EDP Number	Description	Material
8080801	XOHW1104PDR	PCD

List 6640

BT30

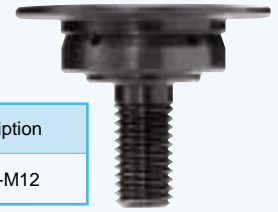


HSK 40A



Optional

Clamping Bolt with Oil Hole



EDP Number	Description
99640	BT30-FMOA25.4-29

EDP Number	Description
99634	HSK40A-FMO25.4-49

EDP Number	Description
99632	MBAH-M12



OSG

676 E. Fullerton Avenue
Glendale Heights • IL 60139
TEL: 800.837.2223 • FAX: 800.837.3334
www.osgtool.com



735 E. Remington Road • Schaumburg • IL 60173
800. 228. 2969 • Fax 847.882.9056
www.vega-tool.com